



**GRAND**  
INFLATABLE BOATS



***Golden Line 6580***



[www.grandboats.com](http://www.grandboats.com)



# Golden Line G580 Technical Data

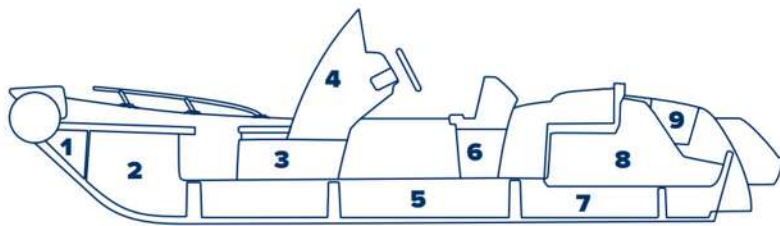
Length overall, cm .....	585
Width overall, cm .....	245
Length inside, cm .....	427
Width inside, cm .....	145
Tube diameter, cm .....	50
Bare boat weight*, kg .....	535
Transport gross weight**, kg .....	650
Loading capacity***,kg .....	1200
Engine recommended, HP .....	130

Engine max***, HP .....	150
Engine weight max, kg .....	240
Engine shaft length, inch .....	20”(L)
Midsection/aft deadrise, degrees .....	20°/17°
Bottom type .....	RIB
Boat design category**** .....	D,C

**Remarks:**

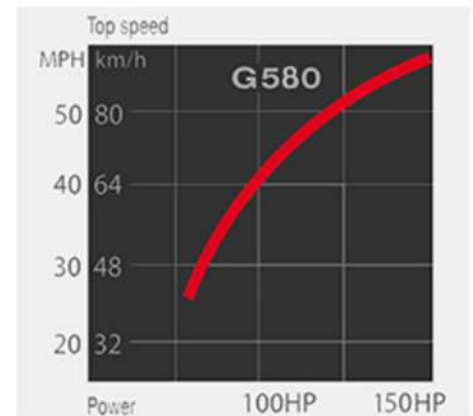
- \* - The bare boat weight is just a weight of the empty boat without any removable accessories.
- \*\* - The transport gross weight is the a weight of the complete boat in standard package.
- \*\*\* - Because of differences of local boatbuilding standarts The Loading capacity and Maximum Engine Power may vary by country. Please check that with your local GRAND dealers.
- \*\*\*\* - Boat design category under European Union Directive 2013/53/EU.

## Compartment Chart

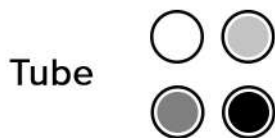


- |                           |  |
|---------------------------|--|
| 1 - Bow anchor storage    | 6 - Double seat storage                |
| 2 - Bow locker            | 7 - Lower rear storage                 |
| 3 - Console storage       | 8 - Main rear storage                  |
| 4 - Glove box with hatch  | 9 - Rear rope storage (left and right) |
| 5 - Fuel tank compartment |  |

## Performance Chart



Performance data are approximate for boat with light load



### Standard Features

- Deep-V fiberglass hull with transom extensions, bow towing eye and self-bailing cockpit
- Inflatable tube with fiberglass step ends
- Bow locker with anchor compartment and hatch
- Bow step plate with navigation lights, anchor roller and cleat
- Steering console CL-22, with front seat, windshield, side rails, grab handle and glove box
- Double seat SD-22
- Molded in bow locker with large access cover, anchor compartment and soft cushion
- Rear locker with access panel, lifters, soft seat and seat back
- Two rear pull up stainless steel cleats, two towig eyes
- Two rear rope hatches
- Built-in fuel system with 90 liter tank and sender

### Grand Luxe Features

- Two swimming platforms with folding ladder
- Stainless steel bow rails
- Electric package with nav. lights, bilge pump, electric horn, switches, battery switch and complete wiring

### Optional Equipment

- Bow removable sundeck with cushions/table
- Bow removable sundeck extention with cushion
- Water shower set with pump and 50l tank
- Stainless steel navigation/waterski towing arch
- Waterski towing arch with towing eye and GRP top
- Hydraulic steering system
- Steering wheel PERFORMANCE (black)
- Stainless steel bimini top
- Overall cover, consoles and rear seat covers
- Two overpressure valves
- Keel and tube protector packages
- SILVERTEX upholstery upgrade
- SeaDek antiskid set

YOUR LOCAL DEALER

